



GUANGZHOU YOUGUANG OPTOELECTRONICS CO.,LTD.

CONTENT

Digital Products (LCD/LED Screen)	2
ADA01-32 & -43 32"/43" A-Frame LCD Signage	3
ADA02N (Non-battery)/ADA02B (Battery) 32" L-Frame LCD Signage	4
ADA03DA 43 inch LCD Signage with Wheels	5
ADA03D Rechargeable 43inch indoor LCD signage with wheels	6
ADA03H Battery-powered wheel 43 inch waterproof LCD	7
ADA04 21.5 " LCD signage with LED Writing-board	8
ADA04W-27 & -32 Wall-mounted 27"/32"LCD Signage with LED Writing-board	9
ADA06 Solar Battery 43inch outdoor LCD signage with wheels	10
ADS01-43 &-49 &-55 43" /49" /55" LCD Advertising Stand Machine	11
ADS03 43" 49" 55 " Ultra-thin IR-Touch LCD signage	12
ADS04 43" Floor-standing LCD signage	13
ADH01-43 & -55 43"/55" Hanging LCD Signage	14
ADH02 15.6" & 21.5" LCD Signage & LED Light Box Double Side Advertising	15
ADH02S 15.6" & 21.5" Single Side Advertising LCD Signage	16
LCTN04-32"32" Touchable LCD Lectern with Magnetic LED Light Box	17
ADW04 Wall mounted Dual Screen LCD Signage	18
ADW01-43 &-49 &-55 43"/49"/55"Wall-mounted LCD Menu Board	19
ADW02-43 & -55 43"/55" UHD 4K LCD Signage	20
SCNH01 P2.0 Hanging LED Screen	21
SCNS01 P2.5 Indoor Floor Standing LED Screen	22
SCNS01 P2.5 Outdoor Floor Standing LED Screen	23
SCNB01 P3.0 LED Screen Banner	24
SCNB02 P2.5 LED Screen Banner	25
SCNR01 P2.0 Round LED Screen	26
SCNL01 P4.7 LED LOGO Screen	27
SCNP01 P4.0 Double-Side LED Screen	28
SCNP02 P6.0 Hydraulic Floor Standing LED Screen	29
SCNW01 P4.0 Single-side LED Screen	30
SCNS01 P2.5 Square Column LED Screen	31
Charging Stations	32
CHR07 LCD Charging Station	33
CHR03D LCD Charging Station with Brochure Holder	34
CHR03S LCD Charging Station	35
CHR01S LCD Wired & Wireless Charging Station	36
CHR01D Poster Wired & Wireless Charging Station	37
CHR09 SEG Poster Wired & Wireless Charging Station	38
CHR02S LED Light Box Charging Station	39
MPBK01 Menu Power Bank 01	40
MPBK02 Menu Power Bank 02	41

Anti-COVID Product	42
THER01 Face Recognition Thermometer	43
HYGN01A Auto Hand Sanitizer with 21.5" LCD Screen	44
HYGN01P Auto Hand Sanitizer with Poster	45
Light Boxes	46
DYN Dynamic LED Light Box	47
SST Ultra Slim LED Light Box	48
YGY Snap Frame LED Light Box	49
SDB Magnetic LED Light Box	50
ARB Back-lit ARC LED Light Box	51
YGBD Double-Side Frameless Edge-lit LED Light Box	52
YGQ Back-lit LED Light Box	53
YGW Hinged Waterproof LED Light Box	54
YGW43 Lockable Waterproof LED Light Box	55
CRS Single-Side Crystal LED Light Box	56
FDS Double-Side Snap Frame LED Light Box	57
CRD Double-Side Crystal LED Light Box	58
Solar Advertising Products	59
SQL Solar LED Light Box	60
Poster Frames	61
TPH Vertical Biconvex Light Box	62
DY01 32mm Snap Poster Holder	62
DY05 25mm Snap Poster Holder	63
YS003 Side Slide Poster Holder	63
DY03 30mm Outdoor Lockable Poster Frame	64
DY04 50mm Outdoor Notice Board	64
Lecterns	65
LCTN01 LED Lighting Lectern	66
LCTN02 LED Lectern with Step & Shelf	67
LCTN04-32"32" Touchable LCD Lectern with Magnetic LED Light Box	68
Illuminated Display Cabinet	69
LPAD LGP LED Light Pad Module	70
LED Lighting	71
YLP LGP Edge-lit LED Light Panel	72
YTP LED Back-lit Light Panel	73



Company introduction

Guangzhou YouGuang Optoelectronics Co., Ltd. ,established in the year 2000, is an advertising display equipment system integration company. We develop, produce and sell a variety kinds of display products , ranging from digital LCD signage, LED screen signage, display phone charging station, display light box, solar light box, LGP to traditional poster products. Our vision is to become a full range of advertising display product provider, to offer our customers an one-stop total solution service. By 20 years of industry experience, strong R & D team, customized product expertise, good production quality control, our products are widely sold in the United States, Japan, Europe, Australia, China and dozens of countries around the world. With our brand YG Displays, we look forward to and welcome the cooperation with customers from everywhere of the world.

Digital Products (LCD/LED Screen)

ADA01-32 & -43

32"/43" A-Frame LCD Signage



Product Features

- Fashionable aluminum black frame
- World brand high resolution screen
- Support Wi-Fi / Ethernet / Bluetooth connection
- 2G RAM /32G ROM Android OS with RK3568 chipset
- Easily editable & managing display software

Specification

Model No.	ADA01-32 & -43
Optimum Resolution	1080 x 1920
Contrast Ratio	1200:1/4000:1
Brightness	350~450 nits
Operating System	Android
Input Voltage	AC/100~240V 50/60Hz
Display Software	Included
File Types	WMV、AVI、FLV、RM、RMVB、MPEG、TS、MP4



ADA02N (Non-battery)/ADA02B (Battery) 32" L-Frame LCD Signage

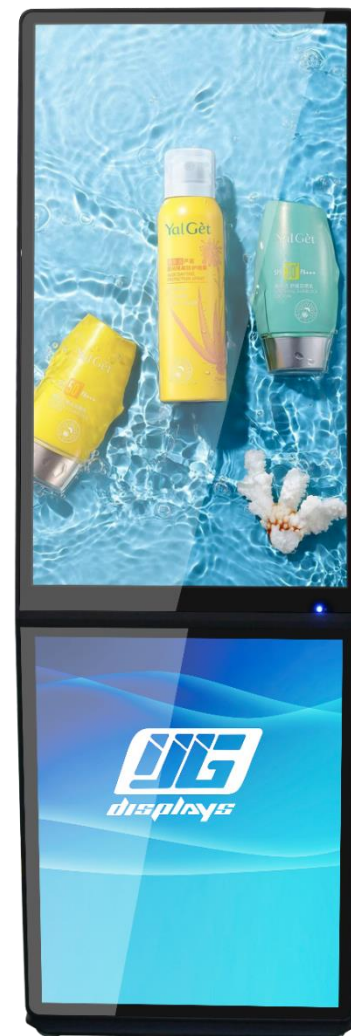


Product Features

- Fashionable aluminum black frame
- World brand high resolution screen
- Support Wi-Fi / Ethernet / Bluetooth connection
- 2G RAM /32G ROM Android 11.0 with RK3568 chipset
- Easily editable & managing display software
- Battery driving available as an option
- Light box display at the lower front to display store sign

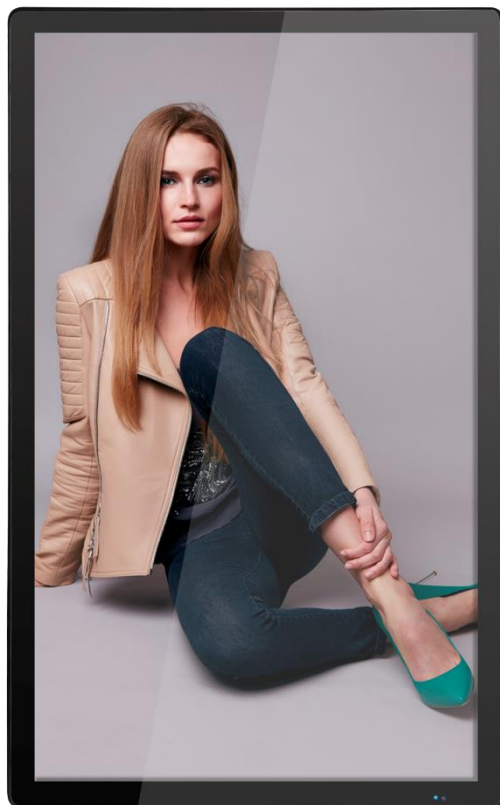
Specification

Model No.	ADA02N (Non-battery)/ADA02B (Battery)
Optimum Resolution	1080 x 1920
Contrast Ratio	1200:1
Brightness	350-450 nits
Operating System	Android
Input Voltage	AC/100~240V 50/60Hz
Display Software	Included
File Types	WMV、AVI、FLV、RM、RMVB、MPEG、TS、MP4



ADA03DA

43 inch LCD Signage with Wheels



Product Features

- 178° wide viewing angle
- 43 inch world brand LCD screen
- Easy moving.
- Local and remote control system
- Support Wi-Fi / Ethernet connection.
- SKD 8h working time battery.

Specification

Model No.	ADA03DA
Optimum Resolution	1920 x 1080
Contrast Ratio	1200:1
Brightness	350~450 nits
Operating System	Android
Input Voltage	AC/ 100~240V 50~60Hz
Display Software	Included
File Types	WMV, AVI, FLV, RM, RMVB, MPEG, TS, MP4



ADA03D

Rechargeable 43inch indoor LCD signage with wheels



Product Features

- With wheels and handle for easy moving
- Battery driving available as an option
- World brand high resolution screen
- 2G RAM/ 32G ROM Android 11.0 with RK3568 chipset
- Removable battery for easy charging
- Support WI-FI/ Ethernet /Bluetooth connection

Specification

Model No.	ADA03D
Optimum Resolution	1080 x 1920
Contrast Ratio	1200:1 / 4000:1
Brightness	350~450 nits
Operating System	Android
Input Voltage	AC/ 100~240V 50~60Hz
Display Software	Included
File Types	WMV, AVI, FLV, RM, RMVB, MPEG, TS, MP4



ADA03H

Battery-powered wheel 43 inch waterproof LCD

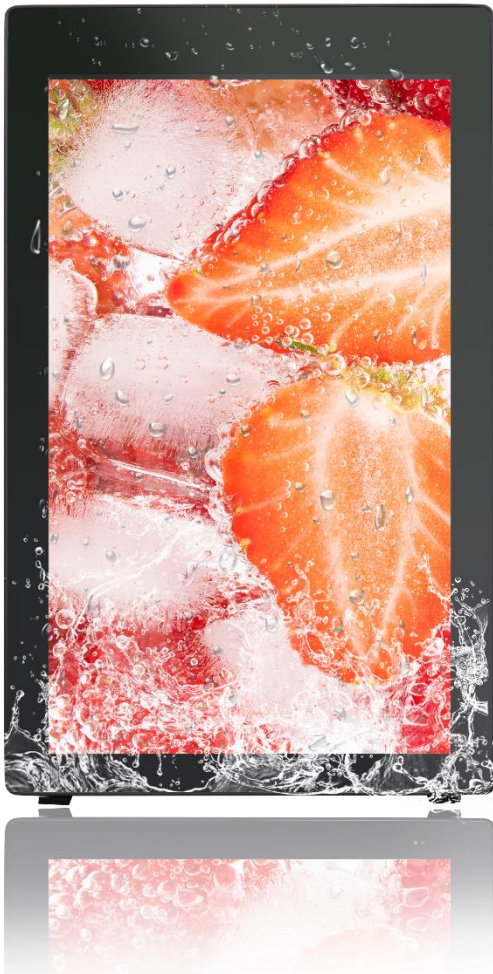


Product Features

- IP55 : The ADMA03H is used for outdoor with waterproof function.
- With wheels and handle for easy moving
- Battery driving available as an option
- World brand high resolution screen
- 2G RAM/ 32G ROM Android 11.0 with RK3568 chipset
- Removable battery for easy charging
- Support WI-FI/ Ethernet /Bluetooth connection

Specification

Model No.	ADA03H
Optimum Resolution	1080 x 1920
Contrast Ratio	1200:1
Brightness	2000 nits (Automatically dimming according to circumstance's brightness)
Operating System	Android
Input Voltage	AC/ 100~240V 50~60Hz
Display Software	Included
File Types	WMV, AVI, FLV, RM, RMVB, MPEG, TS, MP4



ADA04

21.5 " LCD signage with LED Writing-board



Product Features

- 21.5 inch LCD advertising display with writing board
- Lightweight aluminium frame
- World brand control system
- Support Wi-Fi / Ethernet connection
- Fashionable outlook for Indoor used

Specification

Model No.	ADA04
Optimum Resolution	1080 x 1920
Contrast Ratio	1100:1
Brightness	350~450 nits
Operating System	Android
Input Voltage	100-240V AC(50/60Hz) / 1.5A(MAX) / 0.25A(non-battery)
Display Software	Included
File Types	MPEG1 、MPEG2 、MPEG4 、H.264 、WMV 、MKV 、TS 、flv



ADA04W-27 & -32

Wall-mounted 27"/32"LCD Signage with LED Writing-board



Product Features

- 27"or 32"LCD screen with LED writing board
- Lightweight wooden grain /black aluminum frame
- Signway smart control system
- Support Wi-Fi / Ethernet web connection
- Fashionable outlook for Indoor use

Specification

Model No.	ADA04W-27 & -32
Optimum Resolution	1080 x 1920
Contrast Ratio	1200:1 (typical)
Brightness	400 nits
Operating System	Android
Input Voltage / Ampere	100-240V AC(50/60Hz) / 0.47A
Display Software	Included
File Types	AVI, MPEG4, WMV, MKV, FLV, MP4, MOV



ADA06

Solar Battery 43inch outdoor LCD signage with wheels



Product Features

- 12 hrs battery + solar charging
- World brand high resolution screen
- 2G RAM/ 32G ROM Android 11.0 with RK3568 chipset
- Support WI-FI/ Ethernet /Bluetooth connection

Specification

Model No.	ADA06
Optimum Resolution	1080 x 1920
Contrast Ratio	1200:1
Brightness	2000 nits
Operating System	Android
Input Voltage	AC/ 100~240V 50~60Hz
Display Software	Included
File Types	WMV, AVI, FLV, RM, RMVB, MPEG, TS, MP4





ADS01-43 &-49 &-55 43" /49" /55" LCD Advertising Stand Machine

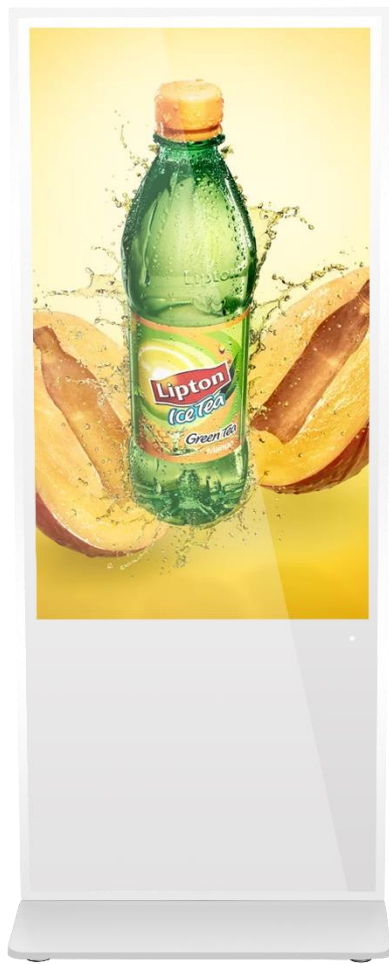


Product Features

- World brand high resolution screen
- Support Wi-Fi / Ethernet / Bluetooth connection
- 2G RAM /32G ROM Android OS with RK3288 chipset
- Easily editable & managing display software
- IR touching available
- Wheels included

Specification

Model No.	ADS01-43 &-49 &-55
Optimum Resolution	1080 x 1920
Contrast Ratio	1200:1/4000:1
Brightness	350~450 nits
Operating System	Android
Input Voltage	AC/100~240V 50/60Hz
Display Software	Included
File Types	WMV、AVI、FLV、RM、RMVB、MPEG、TS、MP4



ADS03 43" 49" 55 " Ultra-thin IR-Touch LCD signage



Product Features

- World brand high resolution screen
- Support Wi-Fi / Ethernet / Bluetooth connection
- 2G RAM /32G ROM Android 11.0 with RK3568 chipset
- Easily editable & managing display software
- IR touching
- Wheels included

Specification

Model No.	ADS03-43 &-49 &-55
Optimum Resolution	1080 x 1920
Contrast Ratio	1200:1
Brightness	450 nits
Operating System	Android
Input Voltage	AC/100~240V 50/60Hz
Display Software	Included
File Types	WMV、AVI、FLV、RM、RMVB、MPEG、TS、MP4

ADS04

43" Floor-standing LCD signage



Product Features

- Slim & Simplified Freestanding Design;
- 43" Digital Screen with 1080p Resolution;
- Android 11.0 Operating System
- Supports Image, Video, and Audio Files;
- Equipped with Signway Software

Specification

Model No.	ADS04
Overall size	580×360×1560mm
LCD size	43"
Brightness (at white)	450nits
Contrast Ratio	1000 :1
Visual angle	89/89
Operating System	Android 11.0
Software	Signway
Interface	USB2.0×2, RJ45×1, SD card; WIFI
Power consumption(Watt)	64W
Input Voltage	100-240V AC(50/60Hz)



ADH01-43 & -55

43"/55" Hanging LCD Signage



Product Features

- Fashionable steel frame
- Single side display
- World brand high resolution screen
- Support Wi-Fi / Ethernet / Bluetooth connection
- 2G RAM /32G ROM Android 11.0 with RK3568 chipset
- Built-in Content Management System

Specification

Model No.	ADH01-43 & -55
Optimum Resolution	1080 x 1920
Contrast Ratio	1200:1/4000:1
Brightness	350~450 nits (1000nits is optional)
Operating System	Android
Input Voltage	AC/100~240V 50/60Hz
Display Software	Included
File Types	MP3、WMA、WAV、APE、FLAC、AAC、OGG、M4A、3GPP



ADH02

15.6" & 21.5" LCD Signage & LED Light Box Double Side Advertising



Product Features

- Double side display: One side LCD+ One side crystal light box
- World brand high resolution screen
- Support Wifi/ Ethernet/ Bluetooth connection
- 2G RAM / 32G ROM Android 11.0 with RK3568
- Built-in Content Management System

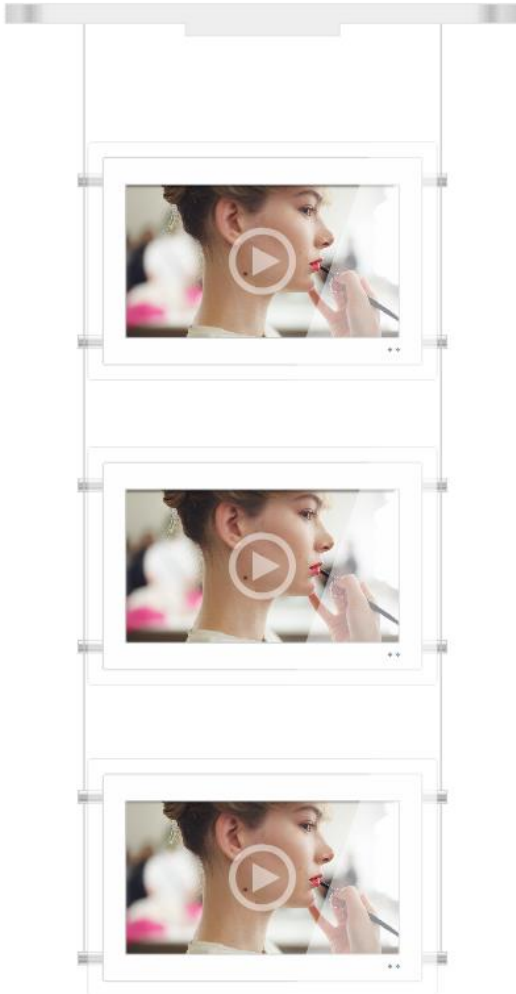
Specification

Model No.	ADH02
Optimum Resolution	1920x 1080
Contrast Ratio	1000:1
Brightness	400 nits
Operating System	Android
Input Voltage	AC/ 100~240V 50~60Hz
Display Software	Included
File Types	wmv 、 avi 、 flv 、 rmvb 、 mpeg 、 ts 、 H265 、 mp4



ADH02S

15.6" & 21.5" Single Side Advertising LCD Signage



Product Features

- Double side display: One side LCD+ One side crystal light box
- World brand high resolution screen
- Support Wifi/ Ethernet/ Bluetooth connection
- 2G RAM / 32G ROM Android 11.0 with RK3568
- Built-in Content Management System

Specification

Model No.	ADH02
Optimum Resolution	1920x 1080
Contrast Ratio	1000:1
Brightness	450~500 nits
Operating System	Android
Input Voltage	AC/ 100~240V 50~60Hz
Display Software	Included
File Types	wmv 、 avi 、 flv 、 rmvb 、 mpeg 、 ts 、 H265 、 mp4

LCTN04-32"

32" Touchable LCD Lectern with Magnetic LED Light Box



Product Features

- 32" LCD screen PCAP touch
- Equipped with magnetic LED light box
- World brand high resolution screen
- 2G RAM / 32G ROM Android 11.0 with RK3568 chipset
- Support WI-FI/ Ethernet /Bluetooth connection

Specification

Model No.	LCTN04
Optimum Resolution	1080 x 1920
Contrast Ratio	1200:1
Brightness	350~400 nits
Operating System	Android
Input Voltage	AC/ 100~240V 50~60Hz
Display Software	Included
File Types	WMV, AVI, FLV, RM, RMVB, MPEG, TS, MP4



Digital Products

ADW04

Wall mounted Dual Screen LCD Signage



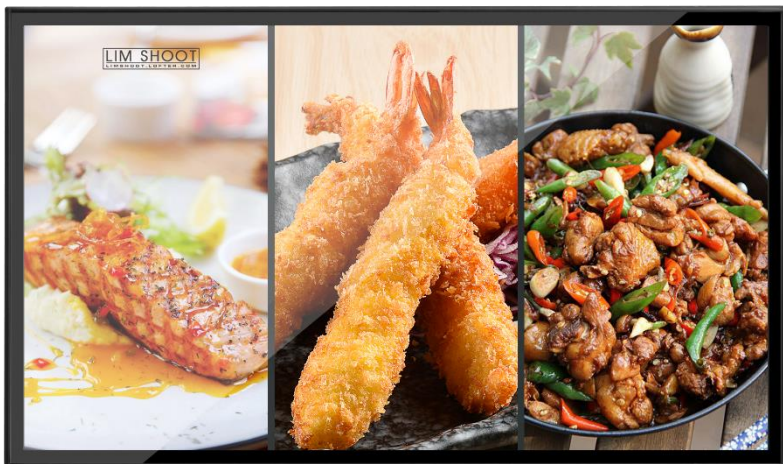
Product Features

- Dual screens design
- Ultra-slim outlook
- Fashionable Round corner
- Multi-interfaces
- Program display interactively

Specification

Model No.	ADW04
Overall size	624*284*30mm
LCD size	18.5"+10.1"
Brightness (at white)	250nits
Contrast Ratio	1000 :1
Visual angle	89/89
Operating System	Android 5.1
Software	Signway included
Interface	USB2.0×2, RJ45×1, SD card; WIFI
Power consumption(Watt)	21W
Input Voltage	100-240V AC(50/60Hz)





ADW01-43 &-49 &-55 43"/49"/55"Wall-mounted LCD Menu Board



Product Features

- Fashionable aluminum black frame
- World brand high resolution screen
- Support Wi-Fi / Ethernet / Bluetooth connection
- 2G RAM /32G ROM Android 11.0 with RK3568 chipset
- Easily editable & managing display software
- IR touching available

Specification

Model No.	ADW01-43 &-49 &-55
Optimum Resolution	1920 x 1080
Contrast Ratio	1200:1 /4000:1
Brightness	350~450 nits
Operating System	Android
Input Voltage	AC/100~240V 50/60Hz
Display Software	Included
File Types	WMV、AVI、FLV、RM、RMVB、MPEG、TS、MP4



ADW02-43 & -55

43"/55" UHD 4K LCD Signage



Multi-zone

LOOPS

Android

LED

4K UHD

View angle
178°

WIFI

- Product Features**
- 3840x2160, 4K UHD Display
 - Built-in Android 11.0 with RK3568 chipset
 - Built-in Content Management System
 - Support Multi Screens 4K Display Splicing
 - Support USB-Plug Display / Remote Information Control

Specification

Model No.	ADW02-43 & -55
Optimum Resolution	3840 x 2160
Contrast Ratio	4000:1 /1200:1
Brightness	500 nits
Operating System	Android
Input Voltage	AC/100~240V 50/60Hz
Display Software	Included
File Types	WMV、AVI、FLV、RM、RMVB、MPEG、TS、MP4



Digital Products



4K

2K



SCNH01 P2.0 Hanging LED Screen

High brightness



RMON



WIFI



Easy maintenance



Product Features

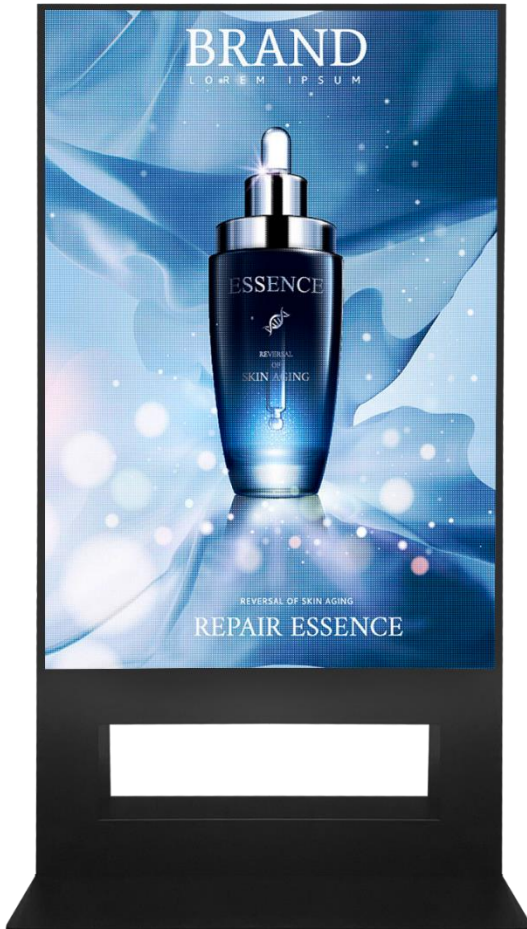
- Fashionable aluminum black frame
- Single side display
- World brand control system
- Support Wi-Fi / Ethernet connection

Specification

Model No.	SCNH01
Fame size	Customized
LED Pitch	P2.0
Module size	128 x 128 mm
Brightness	800~1000 nits
Operation system	NOVA
Best viewing distance	2~3M
Input Voltage	AC/100~240V 50/60Hz
Operating humidity	20~80%
Operating temperature	0~40°C
Service environment	Indoor
Placement style	Hanging

SCNS01

P2.5 Indoor Floor Standing LED Screen

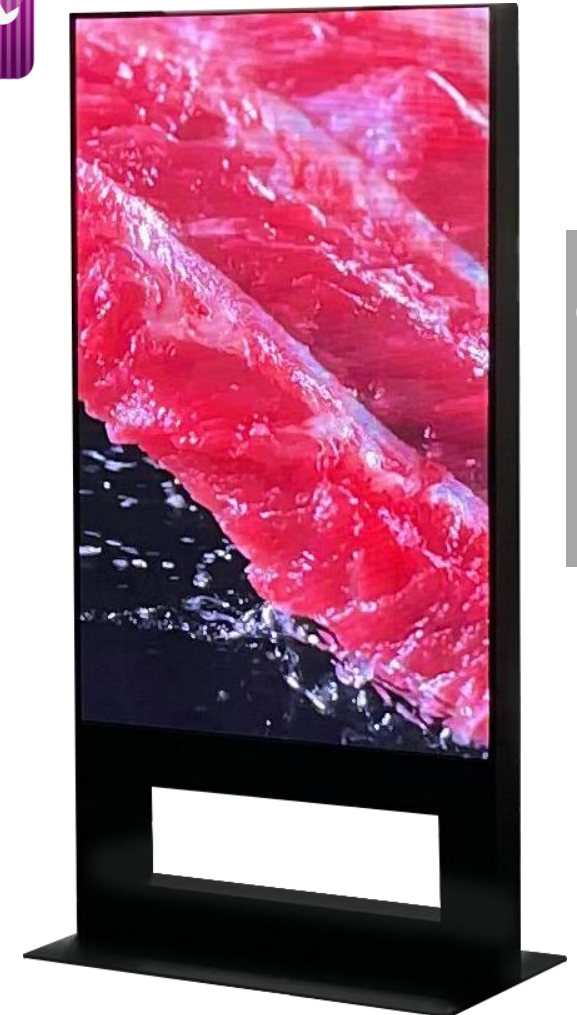


Product Features

- Fashionable aluminum black frame
- Single side display
- World brand control system
- Support Wi-Fi / Ethernet connection

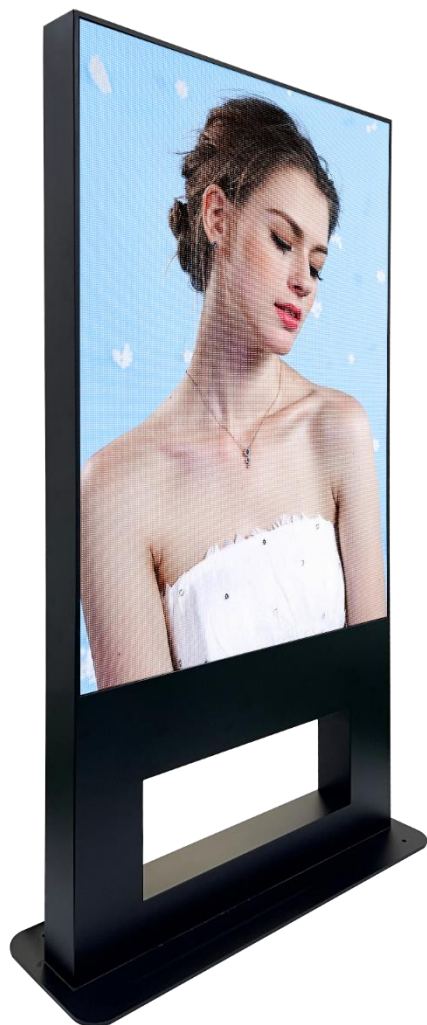
Specification

Model No.	SCNP01
Fame size	Customized
LED Pitch	P2.5
Module size	160 x 160 mm
Brightness	800~1000 nits
Operation system	NOVA
Best viewing distance	2~3M
Input Voltage	AC/100~240V 50/60Hz
Operating humidity	20~80%
Operating temperature	0~40°C
Service environment	Indoor
Placement style	Standing



SCNS01

P2.5 Outdoor Floor Standing LED Screen

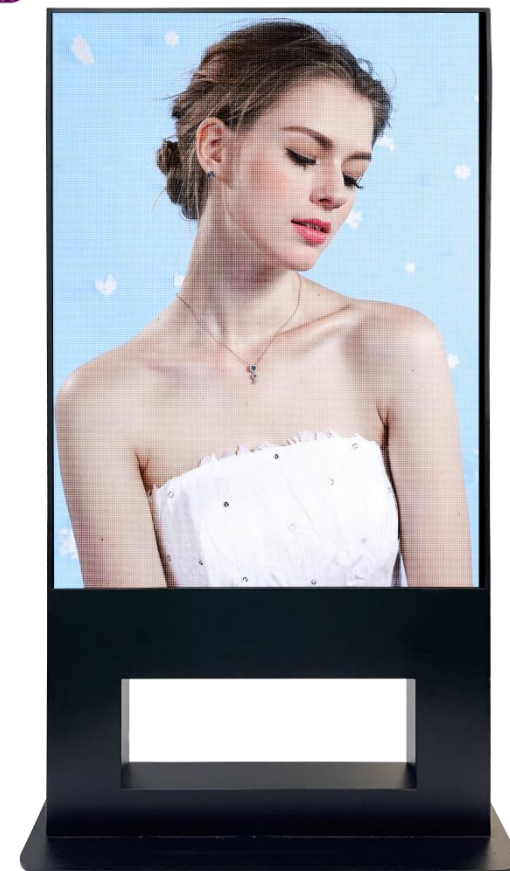


Product Features

- Fashionable aluminum black frame
- Single side display
- World brand control system
- Support Wi-Fi / Ethernet connection

Specification

Model No.	SCNP01
Fame size	Customized
LED Pitch	P2.5
Module size	320 x 160 mm
Brightness	About 4000nits
Operation system	NOVA
Best viewing distance	2~3M
Input Voltage	AC/100~240V 50/60Hz
Operating humidity	20~80%
Operating temperature	-10~45°C
Service environment	Outdoor
Placement style	Standing





Wall Mounting

SCNB01 P3.0 LED Screen Banner



Product Features

- Fashionable aluminum black frame
- World brand control system
- Support Wi-Fi / Ethernet connection
- Multi screens extension use available

Specification

Model No.	SCNB01
Fame size	1925 x 581 x 76 mm
Viewing size	1921 x 576 mm
LED pitch	P3.0
Module size	192 x 192 mm
Brightness	1200~1500 nits
Operation system	NOVA
Best viewing distance	3~4M
Input voltage	AC/100~240V 50/60Hz
Operating humidity	20~80%
Operating temperature	0~40°C
Service environment	Indoor only
Placement style	Floor standing/Wall mounted



Floor Standing



SCNB02

P2.5 LED Screen Banner

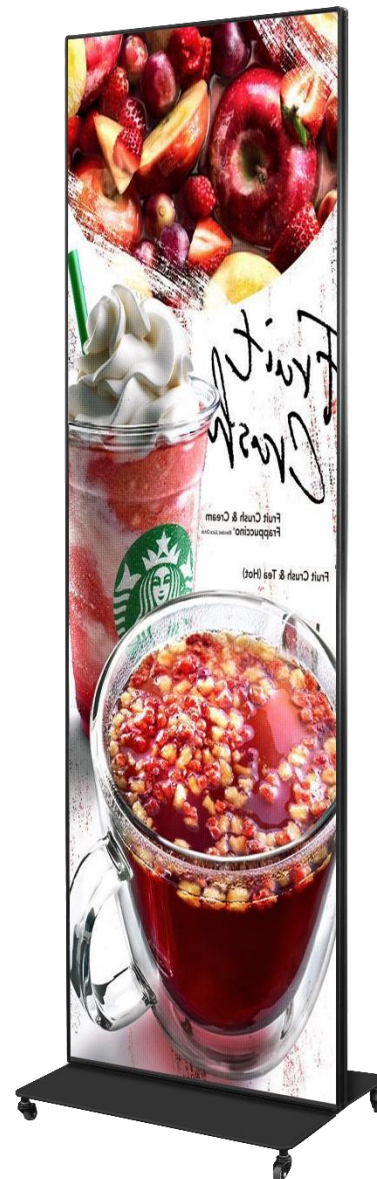


Product Features

- Fashionable aluminum black frame
- World brand control system
- Support Wi-Fi / Ethernet connection
- Multi screens extension use available

Specification

Model No.	SCNB02
Fame size	1896 x 566 x 70 mm
Viewing size	1890 x 560 mm
LED pitch	P2.5
Module size	280 x 210 mm
Brightness	800~1000 nits
Operation system	NOVA
Best viewing distance	2M
Input voltage	AC/100~240V 50/60Hz
Operating humidity	20~80%
Operating temperature	0~40°C
Service environment	Indoor only
Placement style	Floor standing/Wall mounted



SCNR01

P2.0 Round LED Screen



Product Features

- Fashionable round design
- Heavy duty steel frame
- World brand control system
- Support Wi-Fi / Ethernet connection

Specification

Model No.	SCNR01
Size	Customized
LED Pitch	P2.0
Module size	128 x 128 mm
Brightness	800~1000 nits
Operation system	NOVA
Best viewing distance	2~3M
Input voltage	AC/100~240V 50/60Hz
Operating humidity	20~80%
Operating temperature	0~40°C
Service environment	Indoor only
Placement style	Wall mounted





SCNL01

P4.7 LED LOGO Screen

High brightness



RMON



Water Resistant



WIFI



Easy maintenance

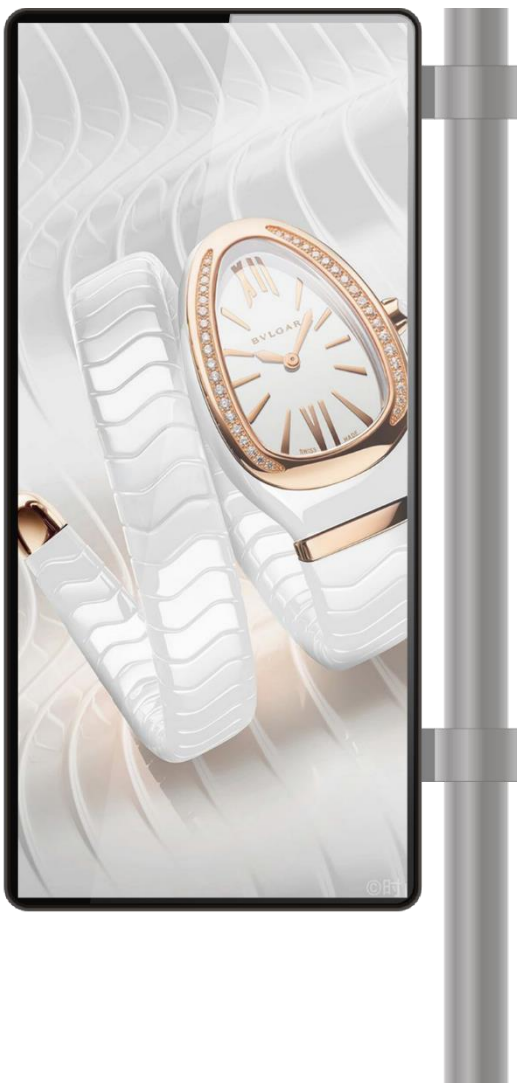


Product Features

- Fashionable round design
- Heavy duty steel frame
- World brand control system
- Support Wi-Fi / Ethernet connection
- Excellent waterproof performance

Specification

Model No.	SCNL01
Fame size	Φ 655 mm
Viewing size	Φ 600 mm
LED Pitch	P4.7
Module Size	300 × 300 mm
Brightness	4000 nits
Operation system	NOVA
Best viewing distance	5M
Input voltage	AC/100~240V 50/60Hz
Operating humidity	20~80%
Operating temperature	-10~45°C
Service environment	Indoor & Outdoor
Placement style	Wall mounted



SCNP01

P4.0 Double-Side LED Screen

High brightness



RMON



Water Resistant



WIFI



Easy maintenance



Product Features

- Heavy duty steel frame
- World brand control system
- Support Wi-Fi / Ethernet connection
- Brightness automatically according to ambient light
- Excellent waterproof performance

Specification

Model No.	SCNP01
Fame size	Customized
LED Pitch	P4.0
Module Size	256 x 128 mm
Brightness	4000 nits
Operation system	NOVA
Best viewing distance	4~5M
Input voltage	AC/100~240V 50/60Hz
Operating humidity	20~80%
Operating temperature	-10~45°C
Service environment	Indoor & Outdoor
Placement style	Pole mounted



SCNP02

P6.0 Hydraulic Floor Standing LED Screen



Product Features

- Heavy duty steel frame
- Hydraulic lifting pole
- World brand control system
- Support Wi-Fi / Ethernet connection
- Excellent waterproof performance

Specification

Model No.	SCNP02
Fame size	Customized
LED Pitch	P6.0
Module size	192 x 192 mm
Brightness	4000 nits
Operation system	NOVA
Best viewing distance	6~7M
Input voltage	AC/100~240V 50/60Hz
Operating humidity	20~80%
Operating temperature	-10~45°C
Service environment	Indoor & Outdoor
Placement style	Floor standing



SCNW01

P4.0 Single-side LED Screen



Product Features

- Heavy duty steel frame
- World brand control system
- Support Wi-Fi / Ethernet connection
- Excellent waterproof performance

Specification

Model No.	SCNW01
Fame size	Customized
LED Pitch	P4.0
Module size	256 x 128 mm
Brightness	4000 nits
Operation system	NOVA
Input voltage	AC/100~240V 50/60Hz
Operating humidity	20~80%
Operating temperature	-10~45°C
Service environment	Indoor & Outdoor
Placement Style	wall mounted





SCNS01 P2.5 Square Column LED Screen



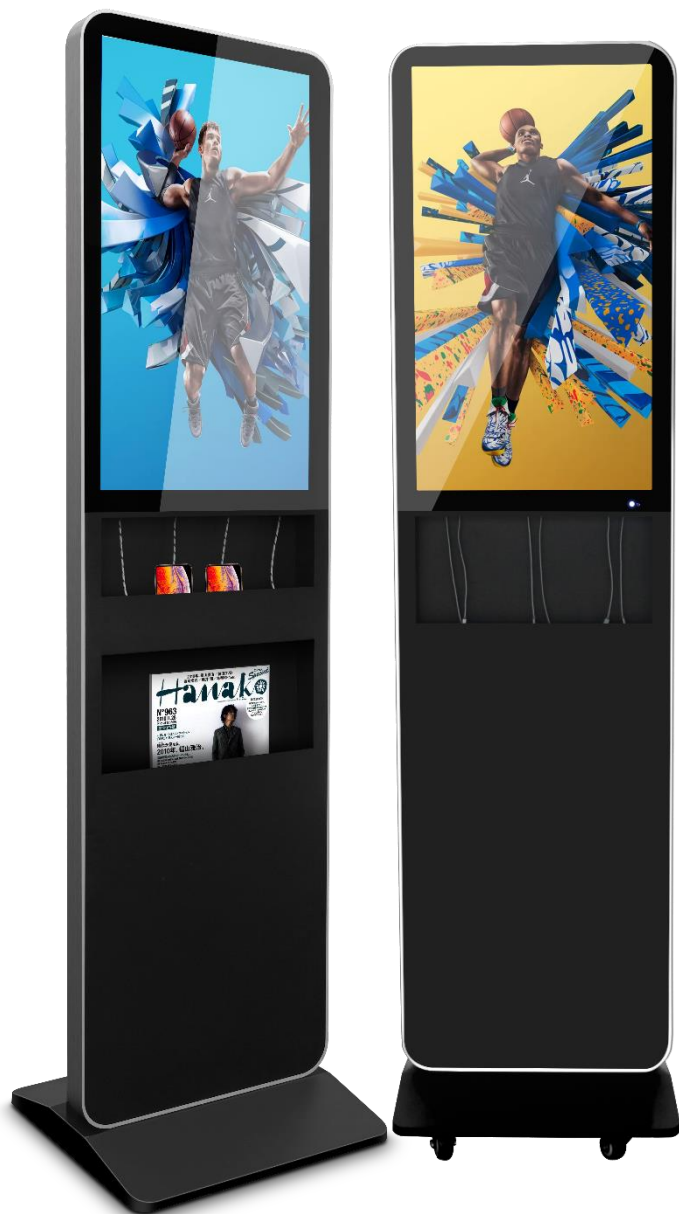
Product Features

- Four sided display
- Module back frame
- World brand control system
- Support Wi-Fi / Ethernet connection

Specification

Model No.	SCNS01
Fame size	Customized
LED Pitch	P2.5
Module Size	160 x 160 mm
Brightness	800-1000 nits
Best viewing distance	2.5~3.5M
Input voltage	AC/100~240V 50/60Hz
Operating humidity	20~80%
Operating temperature	0~40°C
Service environment	Indoor
Placement style	wall mounted

Charging Stations



A

B

CHR07 LCD Charging Station



Product Features

- World brand high resolution screen
- Support Wi-Fi / Ethernet / Bluetooth connection
- 2G RAM /32G ROM Android 11.0 with RK3568 chipset
- Built-in Content Management System
- 6pcs charging cables
- Capacitive touching available
- Brochure holder & wheels available

Specification

Model No.	CHR07
Overall Size	1800 x 468 x 450 mm
Screen Size	32"
Contrast Ratio	1000:1 / 4000:1
Output Voltage	5V
Output Current	Max. 2.4A
Input Voltage	AC/100~240V 50/60Hz
Charging port	Max. 6pcs

CHR03D

LCD Charging Station with Brochure Holder



Product Features

- World brand high resolution screen
- 2G RAM /32G ROM Android 11.0 with RK3568 chipset
- Built-in Content Management System
- 6pcs charging cables
- Support Wi-Fi / Ethernet / Bluetooth connection
- Capacitive touching available

Specification

Model No.	CHR03D
Overall Size	643 x 1889 mm
Screen Size	27"
Base Size	Φ 450 mm
Output Voltage	5V
Output Current	Max. 2.4A
Input Voltage	100~240V
Charging port	Max. 6pcs





CHR03S LCD Charging Station

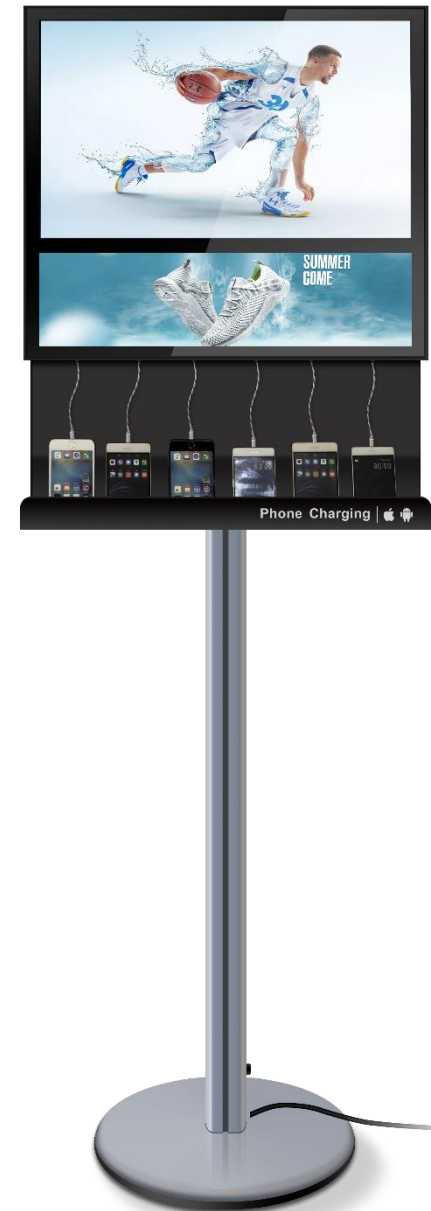


Product Features

- World brand high resolution screen
- 2G RAM /32G ROM Android 11.0 with RK3568 chipset
- Built-in Content Management System
- 6pcs charging cables
- Support Wi-Fi / Ethernet / Bluetooth connection
- Capacitive touching available

Specification

Model No.	CHR03S
Overall Size	843 x 1889 mm
Screen Size	27"
Base Size	Φ 450 mm
Output Voltage	5V
Output Current	Max. 2.4A
Input Voltage	AC/100~240V 50/60Hz
Charging port	Max. 6pcs





CHR01S LCD Wired & Wireless Charging Station



Product Features

- World brand high resolution screen
- 2G RAM /32G ROM Android 11.0 with RK3568 chipset
- Built-in Content Management System
- 3pcs charging cables & 3pcs wireless charging modules
- Support Wi-Fi / Ethernet / Bluetooth connection
- Capacitive touching available

Specification

Model No.	CHR01S
Overall Size	550 x 606 x 1836 mm
Screen Size	32"
Base Size	Φ 450 mm
Output Voltage	5V
Output Current	Max. 2.4A
Input Voltage	AC/100~240V 50/60Hz
Wired Charging Port	3pcs
Wireless Charging Port	3pcs

CHR01D

Poster Wired & Wireless Charging Station



Product Features

- Simple and fashion frame
- 3pcs charging cables & 3pcs wireless charging modules
- Clip frame on both sides

Specification

Model No.	CHR01D
Overall Size	550 x 606 x 1836 mm
Poster Size	420 x 594 mm
Base Size	Φ 450 mm
Output Voltage	5V
Output Current	Max. 2.4A
Input Voltage	AC/100~240V 50/60Hz
Wired Charging Port	3pcs
Wireless Charging Port	3pcs



Charging Stations



CHR09 SEG Poster Wired & Wireless Charging Station



Product Features

- Fashion black frame
- 4pcs charging cables & 1pc wireless charging module & 2pcs USB charging ports
- Double-sided SEG edge-lit Light box

Specification

Model No.	CHR09
Overall Size	600 x 400 x 960 mm
Poster Size	460 x 860 mm
Output Voltage	5V
Output Current	Charging cable & USB port: Max. 2.4A Wireless Charging: Max. 1A
Input Voltage	100~240V 50/60Hz
Charging port	Max. 7pcs

CHR02S

LED Light Box Charging Station



Product Features

- Simple and fashion design
- Edge-lit light box with steel pocket
- 6pcs charging cables

Specification

Model No.	CHR02S
Overall Size	654 x 984 mm
Poster Size	420 x 594 mm
Output Voltage	5V
Output Current	Max. 2.4A
Input Voltage	AC/100~240V 50/60Hz
Charging port	Max. 6pcs



Charging Stations



MPBK01 Menu Power Bank 01

Easy Poster Changing



USB



LOGO Customization



Long Lifespan



Easy Installation



Product Features

- Menu combined with charging design
- 2pcs USB charging port
- 1000 times charge-discharge long lifespan
- LED Illuminated
- CE, FCC, UN38.3 available

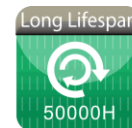
Specification

Model No.	MPBK01
Menu Size	A5,A6,5"x7",4"x6",4"x9",etc
Battery	10400 mA Lithium battery
Input	5V/2A
Output	5V/1A for each port
Logo Printing	Available



MPBK02

Menu Power Bank 02



Product Features

- Menu combined with charging design
- 2pcs USB charging port & 1pc wireless charging module
- 1000 times charge-discharge long lifespan
- LED Illuminated
- CE, FCC, UN38.3 available

Specification

Model No.	MPBK02
Menu Size	A5,A6,5"x7",4"x6",4"x9",etc
Battery	10400 mA Lithium battery
Input	5V/2A
Output	5V/1A for each port
Logo Printing	Available



Anti-COVID Product



THER01

Face Recognition Thermometer

Product Features

- accurate temp. measure fever sign/voice alarm(via speaker)
- cloud server & strong I/O security and person attendance m. system
- adjustable height, suit to use in different occasions
- adjustable angle can be adjusted as need

Specification

Model No.	THER01
Description	Face Recognition Thermometer
LCD spec.	8" touch LCD screen, pixel 800*1280
Camera pixel/focus/IRIS/focal	2mega /fixed/F2.0/4.3mm
Object distance	0.4-1.5 m
Internal Storage Capacity	ROM 2G+ RAM 8G
Face recognition distance	<150cm
Recognition distance setting	Support
Stranger detection	Support
Temperature measurement distance /accuracy	30-50cm best ; beyond that less / ± 0.3 degree
Fever alarm	Support (red/green light + speaker alarm)
multi language	Support : English, French, Spanish, Italian, German, Portuguese, Russian, Polish, Slovak, Nigerian, Turkish, Arabic, Chinese, Japanese, Korean, Thai, Indonesian

HYGN01A

Auto Hand Sanitizer with 21.5" LCD Screen

Product Features

- Free-touch & fast-sensor spray design.
- Big volume water tank allow for 1000 times spray
- 21.5" digital screen with Signway smart control system
- Support Wi-Fi / Ethernet web connection
- Fashionable outlook for Indoor use

Specification

Model No.	HYGN01A
DESCRIPTION	Automatic Hand Sanitizer with 21.5" Digital Screen
LCD size	21.5"
Brightness (typ.)/(min)	250 nits (typ.)
Contrast (typ.)	3000:1 (typ.)
Resolution	1920(H) × 1080(V)
Auto-sensing Distance	in 50-100mm
Response Time	250 ms
Indicator Light	Keep blue light on in work
Volume Per Serve	0.8~1.0 cc per serve
Spray Angle	≈45°
Spray Time	1 second per serve
Input Voltage	110-240V AC(50/60Hz)
Container Capacity	1000 cc





HYGN01P

Auto Hand Sanitizer with Poster

Product Features

- Free-touch & fast-sensor spray design.
- Big volume water tank allow for 1000 times spray
- Energy saving design, 4 c-cell battery stand for 10000 times use.
- A3 nice alum. snap poster, easy to declare COVID warnings or to have advertisings.
- 359mm iron round base, stable, safe, easy to move and use.

Specification

Model No.	HYGN01P
Overall High	1650mm
Poster Size	297mm×420mm aluminum snap frame
Description	Automatic Hand Sanitizer with Poster
Auto-sensing Distance	in 50-100mm
Response Time	250 ms
Indicator Light	keep blue light on in work
Volume Per Serve	0.8~1.0 cc per serve
Spray Angle	≈45°
Spray Time	1 second per serve
Input Voltage	110-240V AC(50/60Hz)
Container Capacity	1000 cc

Light Boxes

DYN

Dynamic LED Light Box



Product Features:

- Dynamic: the personalized dynamic effect and the light movement to make the advertising more attractive
- Controllable: dynamic light source used new LED control technology, with uniform brightness, repeatable programming, energy saving and environmental protection
- Ultra-slim : light box can do 4.0 cm thickness, and can match any size frame
- Convenience for poster changing: it can replace the flashing mode with the USB interface

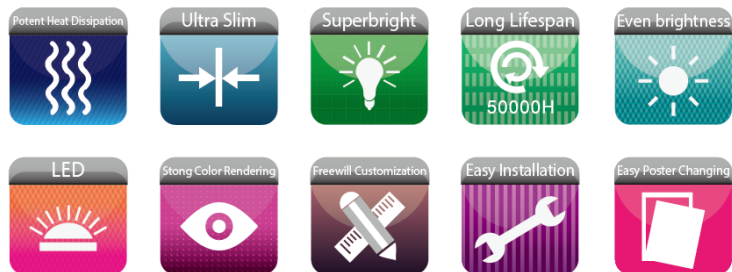
Specification

Model No.	DYN
Frame Size	Customized
Pitch	6.5 mm/10 mm
Content Software	Included
Input Voltage	100~240V 50/60Hz



SST

Ultra Slim LED Light Box



Product Features:

- Super slim design, overall thickness is only 8mm
- Easy to change poster by side sliding in
- LM80 listed LEDs with 50000 hours lifespan
- Desk-top & hanging & wall mounting application are available
- Customization is available



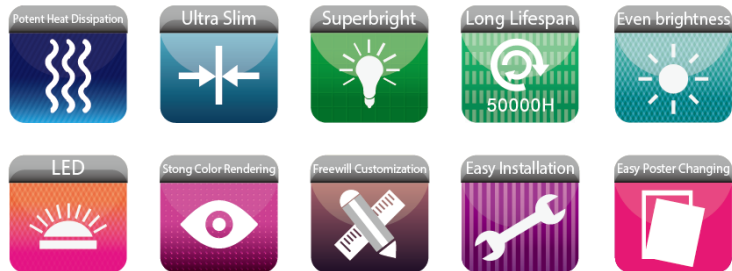
Light Boxes

Specification

Frame Size(mm)	Viewing Size(mm)	Image Size(mm)	"Average Brightness(no graphic)"	Power Consumption
601 x 434.5 x 8 427 x 311.5 x 8 304 x 224.5 x 8	594 x 421 420 x 298 297 x 211	A2: 594 x 420 A3: 420 x 297 A4: 297 x 210	> 4000Lux	About 18W About 10W About 6W

YGY

Snap Frame LED Light Box



Product Features:

- 22mm thickness ultra-slim aluminum profile
- Snap open for poster changing easily and quickly
- Special corners design for safety protection
- LM80 listed LEDs with 50000 hours lifespan
- Silver & black & other specific colors are available
- Customization is available

Specification

Frame Size(mm)	Viewing Size(mm)	Image Size(mm)	Gross Weight	"Average Brightness(no graphic)"	Power Consumption
1228 x 880 x 22 880 x 633 x 22 633 x 459 x 22 459 x 336 x 22	A0: 1168 x 820 A1: 820 x 573 A2: 573 x 399 A3: 399 x 276	A0: 1189 x 841 A1: 841 x 594 A2: 594 x 420 A3: 420 x 297	A0: 10kgs A1: 6kgs A2: 4kgs A3: 3kgs	2500lux Higher brightness available	A0: 40W A1: 25W A2: 11W A3: 7W





SDB Magnetic LED Light Box



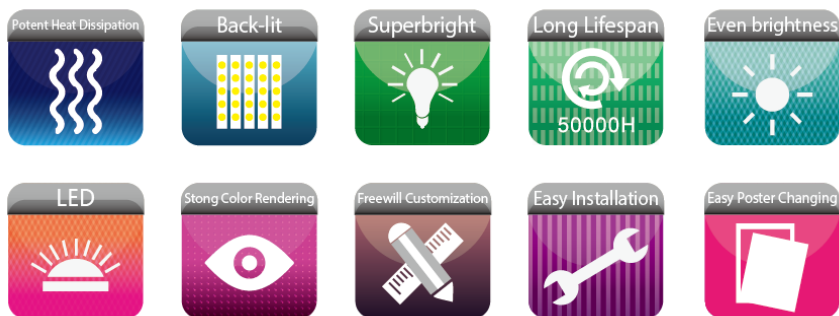
Product Features:

- Round corner design for safety protection
- Suction cup for cover opening makes it easy to switch graphic in seconds
- Sleek, modern design has silver & black finish matching any decor
- LM80 listed LEDs with 50000 hours lifespan
- Single-side & double-side for indoor using only
- SDB frames also support 25mm/29mm/40mm thickness product
- customization is available

Specification

Frame Size(mm)	Viewing Size(mm)	Image Size(mm)	Gross Weight	"Average Brightness(no graphic)"	Power Consumption
A0: 1230 x 882 x 20 A1: 882 x 635 x 20 A2: 635 x 461 x 20 A3: 461 x 338 x 20	A0: 1164 x 816 A1: 816 x 569 A2: 569 x 395 A3: 395 x 272	A0: 1189 x 841 A1: 841 x 594 A2: 594 x 420 A3: 420 x 297	A0: 10kgs A1: 6kgs A2: 4kgs A3: 3kgs	2500lux Higher brightness available	A0: 40W A1: 25W A2: 11W A3: 7W

ARB Back-lit ARC LED Light Box



Product Features:

- Snap open for easy poster changing
- Backlit technology for even illumination
- Curving design to match any pillar advertising
- LM80 listed LEDs with 50000 hours lifespan
- Customization is available

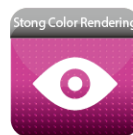
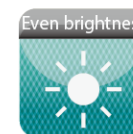
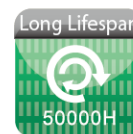
Specification :

Cover	Open Style	Frequency Range	"Average Brightness(no canvas)"	Power/m2	Input Voltage
Clear acrylic + Opal PS	Clip frame	50Hz~60Hz	4000lux	70W	AC85~265V





YGBD Double-Side Frameless Edge-lit LED Light Box



Product Features:

- Edge-lit LED illumination with high brightness and even lighting
- Hanging system for window display to catch more attention
- LM80 listed LEDs with 50000 hours lifespan
- Customization is available

Specification :

Frequency Range	"Average Brightness(no canvas)"	Power/m2
50Hz~60Hz	4000lux	70W

YGQ

Back-lit LED Light Box

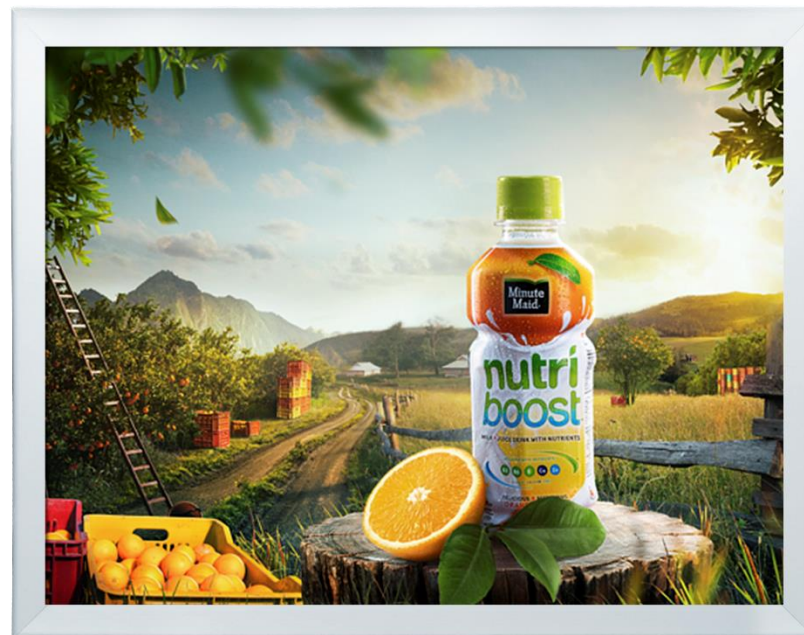


Product Features:

- Profile: 6063 extruded aluminum
- Finish: Silver anodized /black painted
- Ultra thin with unique lens design
- High brightness and even illumination
- Light source: 3014/4014/2835/5630 SMD LED with 50000 hours lifespan and LM80 listed
- Power supply: Internal power supply with CE & UL listed
- Option: Single-side only
- Application: Indoor & outdoor

Specification :

Beam Angel	Open Style	Lens	Frequency Range	"Average Brightness(no canvas)"	Power/m2
170°	Snap frame	PMMA	50Hz~60Hz	4000lux	70W





YGW Hinged Waterproof LED Light Box



Product Features:

- Lockable hinged door frame for indoor or outdoor advertising
- Good waterproof performance reaching IP45
- LM80 listed LEDs with 50000 hours lifespan
- Available for vertical and horizontal installation
- Silver & black & other specific colors are available
- Customization is available

Specification :

Frame Size(mm)	Viewing Size(mm)	Image Size(mm)	Gross Weight	"Average Brightness(no graphic)"	Power Consumption
A0: 1294 x 946 x 42	A0: 1162 x 814	A0: 1189 x 841	A0: 18kg	2500lux Higher brightness available	A0: 40W
A1: 946 x 699 x 42	A1: 814 x 567	A1: 841 x 594	A1: 11kg		A1: 25W
A2: 699 x 525 x 42	A2: 573 x 399	A2: 594 x 420	A2: 7kg		A2: 11W
A3: 525 x 420 x 42	A3: 393 x 270	A3: 420 x 297	A3: 5kg		A3: 7W



YGW43 Lockable Waterproof LED Light Box



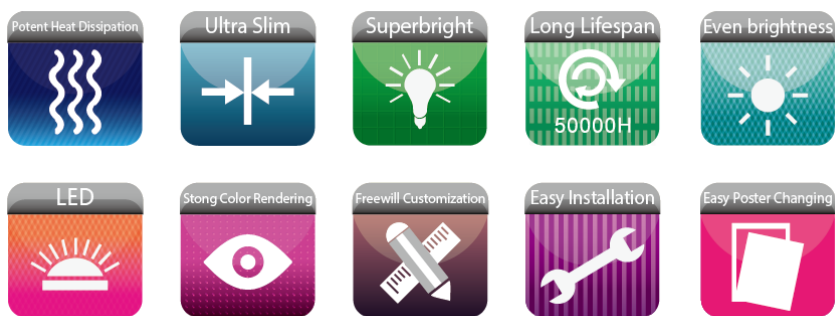
Product Features:

- Lockable hinged door frame for indoor or outdoor advertising
- Good waterproof performance reaching IP45
- LM80 listed LEDs with 50000 hours lifespan
- Available for vertical and horizontal installation
- Silver & black & other specific colors are available
- Customization is available

Specification :

Frame Size(mm)	Viewing Size(mm)	Image Size(mm)	Gross Weight	"Average Brightness(no graphic)"	Power Consumption
A0: 1289 x 941 x 43 A1: 941 x 694 x 43 A2: 694 x 520 x 43 A3: 520 x 397 x 43	A0: 1173 x 825 A1: 825 x 578 A2: 578 x 404 A3: 404 x 281	A0: 1189 x 841 A1: 841 x 594 A2: 594 x 420 A3: 420 x 297	A0: 18kg A1: 11kg A2: 7kg A3: 5kg	2500lux Higher brightness available	A0: 40W A1: 25W A2: 11W A3: 7W

CRS Single-Side Crystal LED Light Box



Product Features:

- 100% pure acrylic clear frame, Edge-lit ultra thin design
- Portrait or landscape installation available
- Wall mounted or counter-top display available
- Both single white color LED and RGB LEDs are available
- Customization is available

Specification :

Frame Size(mm)	Viewing Size(mm)	Gross Weight
A1: 684 x 931 x 11	A1: 564 x 811	A1: 9.4kgs
A2: 510 x 684 x 11	A2: 390 x 564	A2: 5.1kgs
A3: 377 x 500 x 11	A3: 277 x 400	A3: 3.04kgs
A4: 280 x 367 x 11	A4: 190 x 277	A4: 1.7kgs





FDS Double-Side Snap Frame LED Light Box



Product Features:

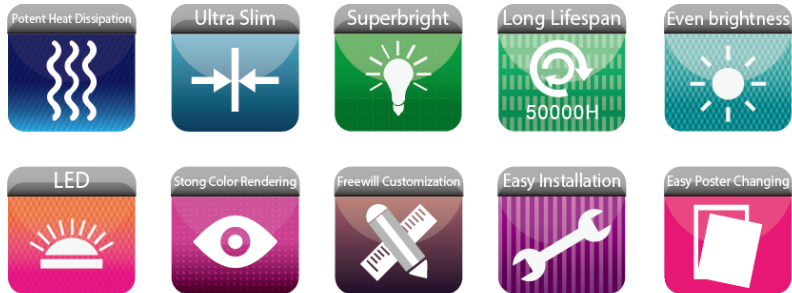
- Hanging to display 2 posters at the same time
- Snap frame for fast and easy poster changing
- Portrait & landscape hanging available
- Hanging chains included for easy mounting
- LM80 listed LEDs with 50000 hours lifespan
- Customization is available

Specification :

Frame Size(mm)	Viewing Size(mm)	Image Size(mm)	Gross Weight	"Average Brightness(no graphic)"	Power Consumption
A0: 1212 x 864 x 43 A1: 864 x 617 x 43 A2: 617 x 443 x 43	A0: 1142 x 794 A1: 794 x 547 A2: 547 x 363	A0: 1189 x 841 A1: 841 x 594 A2: 594 x 420	A0: 16kg A1: 9kg A2: 5kg	2500lux Higher brightness available	A0: 70W A1: 28W A2: 18W

CRD

Double-Side Crystal LED Light Box

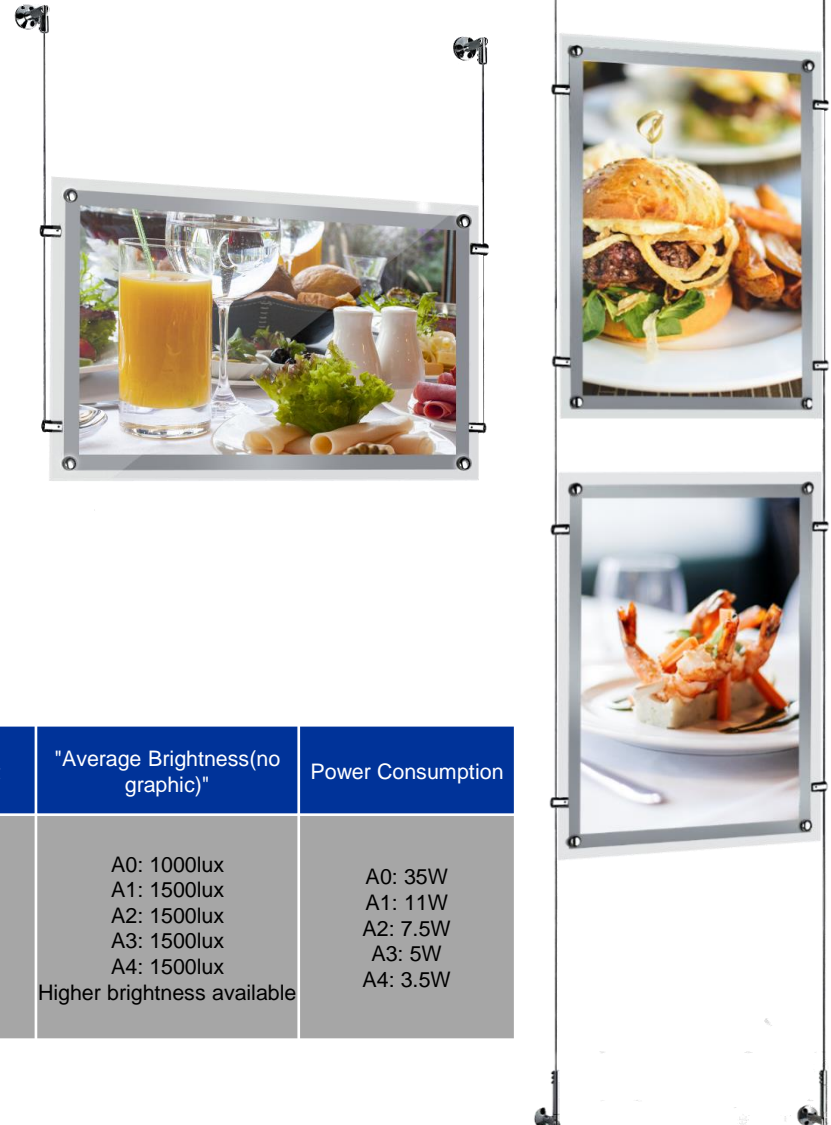


Product Features:

- Hanging system design for window display
- 100% pure acrylic for elegant outlook
- Double Sided display to attract more attention
- LM80 listed LEDs with 50000 hours lifespan
- Portrait or landscape mounting available
- Customization is available

Specification :

Frame Size(mm)	Viewing Size(mm)	Image Size(mm)	Gross Weight	"Average Brightness(no graphic)"	Power Consumption
A0: 1298 x 951 x 14 A1: 957 x 716 x 14 A2: 706 x 530 x 12 A3: 508 x 388 x 9 A4: 290 x 378 x 9	A0: 821 x 1168 A1: 585 x 825 A2: 412 x 590 A3: 289 x 412 A4: 200 x 289	A0: 1189 x 841 A1: 841 x 594 A2: 594 x 420 A3: 420 x 297 A4: 297 x 210	A0: 22kgs A1: 12kgs A2: 6.5kgs A3: 3.5kgs A4: 2.3kgs	A0: 1000lux A1: 1500lux A2: 1500lux A3: 1500lux A4: 1500lux Higher brightness available	A0: 35W A1: 11W A2: 7.5W A3: 5W A4: 3.5W



Solar Advertising Products

SOL

Solar LED Light Box

Product Features:

- Solar energy powered, green lighting
- Multi applications, to be installed in any place with sufficient sunlight
- 24 hours display to attract more attention from the walkers
- Free maintenance lithium battery



SOLP01



SOLP02

Solar Panel	Power	Solar panel
	Seal	Encapsulated with tempered glass
	Lifetime	10 years
Battery	Type	Lithium battery
	Lifetime	Charge & discharge: 1000times
Light Box	Frame	Steel with powder coated
	Light Source	LED
	"Average Brightness (no graphic)"	At least 1000lux
Controller	Regulation	Time & light controlling automatically, light adjusting automatically
	Managing Way	Working automatically with set-up by hours



SOLT01



SOLT02

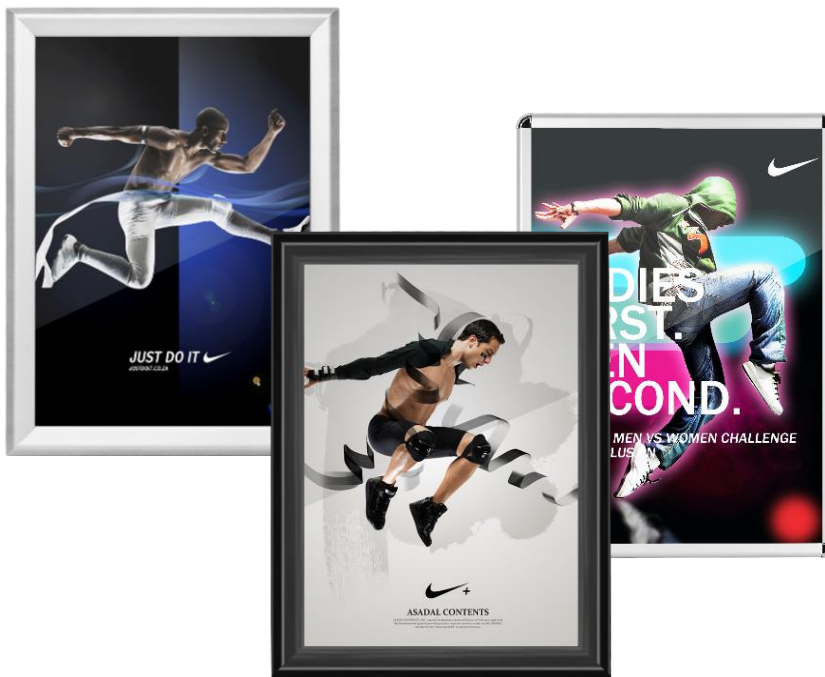
Poster Frames



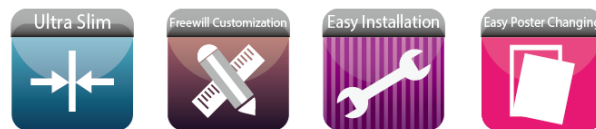
TPH Vertical Biconvex Light Box



- Double-sided curved design provides maximum visibility for posters
- Large format displays to attract more attention
- Quick clip frame for posters change in seconds
- Knock-down packing to save more freight
- Non-glare lenses slide into position with ease



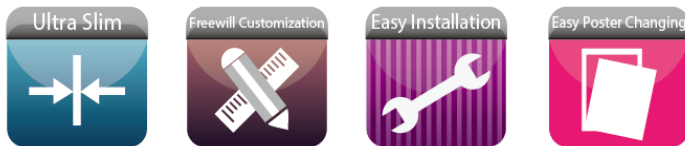
DY01 32mm Snap Poster Holder



- Snap open and closed
- For indoor used only
- 0.4mm non-glare PVC protective lens
- 1.2mm PS back
- 1.0mm alu. alloy material
- Silver & Black as regular colors, Specific colors also available
- Round corner available



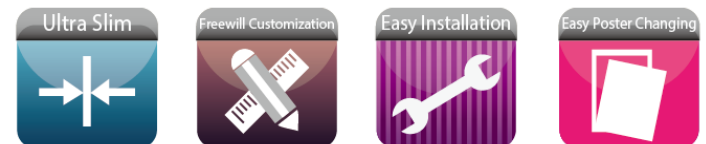
DY05 25mm Snap Poster Holder



- Snap open and closed
- For indoor used only
- 0.4mm non-glare PVC protective lens
- 1.2mm PS back
- 1.0mm alu. alloy material
- Silver & Black as regular colors, Specific colors also available
- Round corner is available



YS003 Side Slide Poster Holder



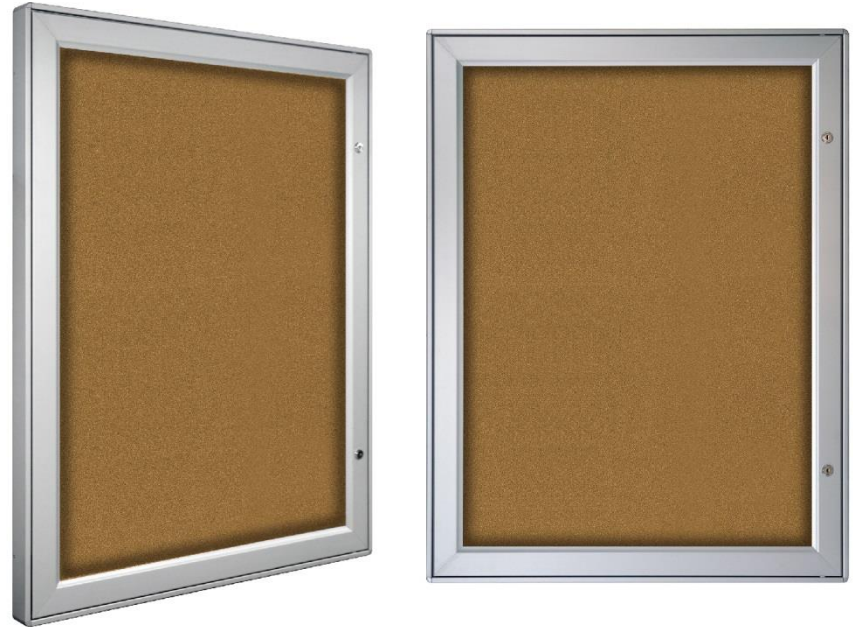
- Sliding poster in or out
- Changing poster quickly and easily
- Non-glare PVC lens to protect the poster
- Customization is available



DY03 30mm Outdoor Lockable Poster Frame



- Lockable hinged door frame for indoor or outdoor advertising
- 2mm PC protective lens
- 3mm PP back
- 1.2mm alu. alloy material
- Silver as regular colors, Specific color also available



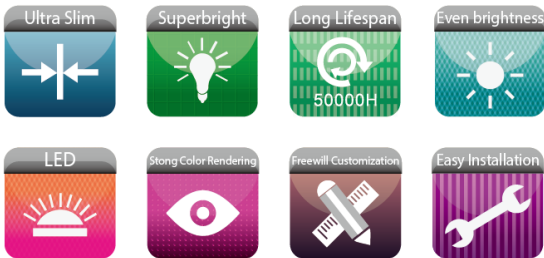
DY04 50mm Outdoor Notice Board



- Pinnable Outdoor Cork Board Frame
- 2mm PC front board
- 1mm cork+8mm EVA+ 0.5mm Iron plate back board
- Silver & Black as regular colors, Specific color also available
- Round corner design for safety protection

Lecterns

LCTN01 LED Lighting Lectern



- Podium stands combine clear acrylic with designed aluminum profile
- Acrylic or steel base & 12mm thick acrylic top offer sturdy unit
- Microphone socket included
- LED illuminated to light up the logo attractively



Lighting effect



Unlit effect



LCTN02 LED Lectern with Step & Shelf



- Heavy duty and fashion black frame
- Microphone holder included
- Wheel included
- Stepper available



LCTN04-32"

32" Touchable LCD Lectern with Magnetic LED Light Box



Product Features

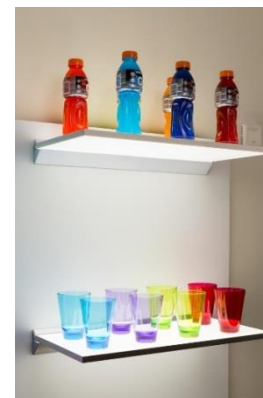
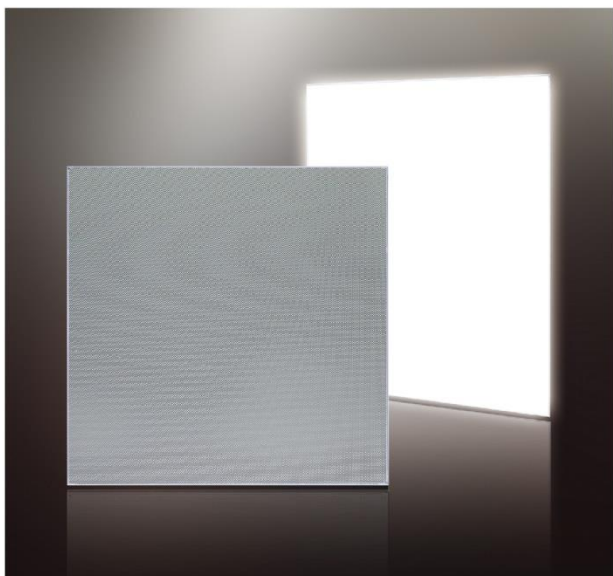
- 32" LCD screen PCAP touch
- Equipped with magnetic LED light box
- World brand high resolution screen
- 2G RAM / 32G ROM Android 11.0 with RK3568 chipset
- Support WI-FI/ Ethernet /Bluetooth connection

Specification

Model No.	LCTN04
Optimum Resolution	1080 x 1920
Contrast Ratio	1200:1
Brightness	350~400 nits
Operating System	Android
Input Voltage	AC/ 100~240V 50~60Hz
Display Software	Included
File Types	WMV, AVI, FLV, RM, RMVB, MPEG, TS, MP4



Illuminated Display Cabinet



LPAD LGP LED Light Pad Module



- Advanced LED and LGP combined technology, to bring you bright, clear and modern exhibition atmosphere
- Easy to install, can be easily integrated into shopping mall, valuable stores design and decoration
- LGP: 100% pure acrylic from Mitsubishi or equivalent supplier
- Can be single side or double-sided light up
- LM80 LEDs with 50000 hours lifetime

LED	C.C.T	"Average Brightness (no graphic)"
3014/4014/2835/5630/ SMD	6000~7000K	customer specified
Input Voltage	Working Tem	Max. Size
AC85~265V	-20°C~50°C	3000 x 1200 mm

LED Lighting



YLP LGP Edge-lit LED Light Panel



- Easy to install on ceiling T bar
- LGP and edge-lit LED emitting design
- High efficiency and uniformity of light emission
- Good thermal dissipation design
- No flicker, UV or IR free
- Energy saving and environmental friendly
- LM80 listed LEDs with more 50000 hours lifespan

ITEM NO.	Size (mm)	Output Power	C.C.T	Luminance(lm)	Ra	LED QTY	Cover	LGP(mm)	Power supply
YLP-0303D19W	296 x 296 x 10/11/15	19W	3000-6000K	> 1520	≥80	84	1.2/1.5mm PS	2.5/3	CCC & CE & UL
YLP-0303S10W	296 x 296 x 10/11/15	10W	3000-6000K	> 800	≥80	60	1.2/1.5mm PS	2.5/3	
YLP-0306S19W	296 x 596 x 10/11/15	19W	3000-6000K	> 1520	≥80	84	1.2/1.5mm PS	2.5/3	
YLP-0306D34W	296 x 596x 10/11/15	34W	3000-6000K	> 2720	≥80	168	1.2/1.5mm PS	2.5/3	
YLP-0312S34W	296 x 1196 x 10/11/15	34W	3000-6000K	> 2800	≥80	168	1.2/1.5mm PS	2.5/3	
YLP-0612D60W	596 x 1196 x 10/11/15	60W	3000-6000K	> 4800	≥80	336	1.2/1.5mm PS	3	
*YLP-0606D34W	596 x 596 x 10/11/15	34W	3000-6000K	> 2800	≥80	168	1.2/1.5mm PS	2.5/3	
YLP-0606F60W	596 x 596 x 10/11/15	60W	3000-6000K	> 5000	≥80	336	1.2/1.5mm PS	2.5/3	
Any customization is available (*with DLC certificate)									

YTP LED Back-lit Light Panel



- Customized brightness to meet customer's requirement
- Frame size: flexible in length and width to meet customer's requirement
- Back-lit LED emitting design, high efficiency and uniformity of light emission



ITEM NO.	Size (mm)	Output Power	C.C.T	Luminance(lm)	Ra	LED Type	Power supply
YTP-0606D60W	596 x 596 x 48	60W	3000-6000K	> 5400	≥80	2835/4014	UL & CCC & CE
Any customization is available							



**We fit to display your business
we fit to display your life**

No.75, Pacific Ind. Zone, Xintang Town, Zengcheng, Guangzhou, China 511340
Tel: +86-20-82705126 (819) Fax: +86-20-82704798
www.youguangopto.com